



Land - Abama - Custom Villas

8687

PROPERTY TYPE	Land		
LOCATION	Abama, Guía de Isora		
COMPLEX	Custom Villas		
VIEWS	Ocean view, Mountain view, Panoramic views		
SALE	1 170 000 €	REFERENCE	8687
LAND	905m ²		

For those who love the challenge of starting from scratch. Introducing Custom Villas, luxury plots at Abama Resort, offering spectacular views of the Atlantic, the golf course and the island of La Gomera. Owners and guests have access to all the facilities at the world-class resort

Plots for residential use, with buildable area of 40% of the plot size, not including the space built below ground.

Abama is strategically located in an enclave of total tranquillity and at the same time with easy access to means of transport.

Motorway access 2 minutes.

Tenerife South Airport: 30 minutes.

Hospital: 24 minutes.

Abama Beach: 9 minutes.

Days of sunshine: 360 a year.

Shopping centre: 6 minutes.

Abama Golf Clubhouse: 7 minutes.

Abama Tennis Centre: 6 minutes.

Sandára Wellness & Spa (opening February 2024).

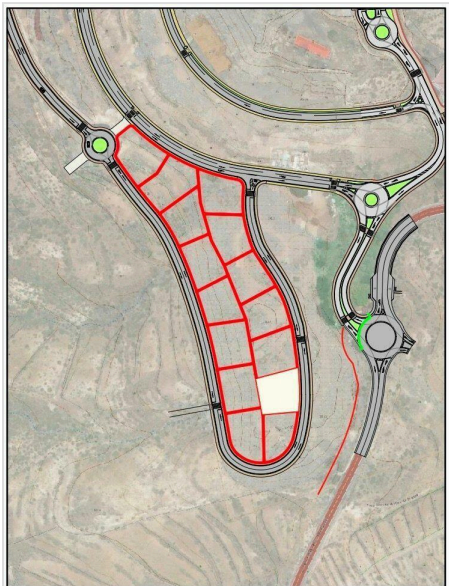
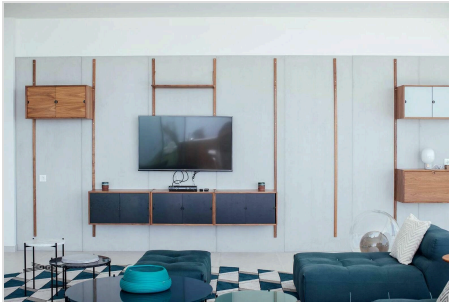
14 restaurants in the complex, 2 of them with Michelin Stars.

The owners of these plots have the possibility to build the house of their dreams, directing the project themselves but always under certain architectural standards to maintain the quality and aesthetic harmony of the resort. Contact with the resort's architects is possible for all interested owners.

The community accessible to the owners of the Abama luxury plots has a 24-hour security service. It is possible to contract services for the management of your villa or house, including cleaning, laundry, gardening, pool maintenance and catering

service.

References Asten Realty: 8684, 8685, 8686 and 8687.



ÁMBITO E: 1/4.000